

PREPARED FOR
 CITY OF PORTSMOUTH
 1 JUNKINS AVENUE
 PORTSMOUTH, NH

**ON-STREET BICYCLE FACILITY
 IMPROVEMENT PROJECT
 LAFAYETTE ROAD/MIDDLE STREET
 PORTSMOUTH, NH**

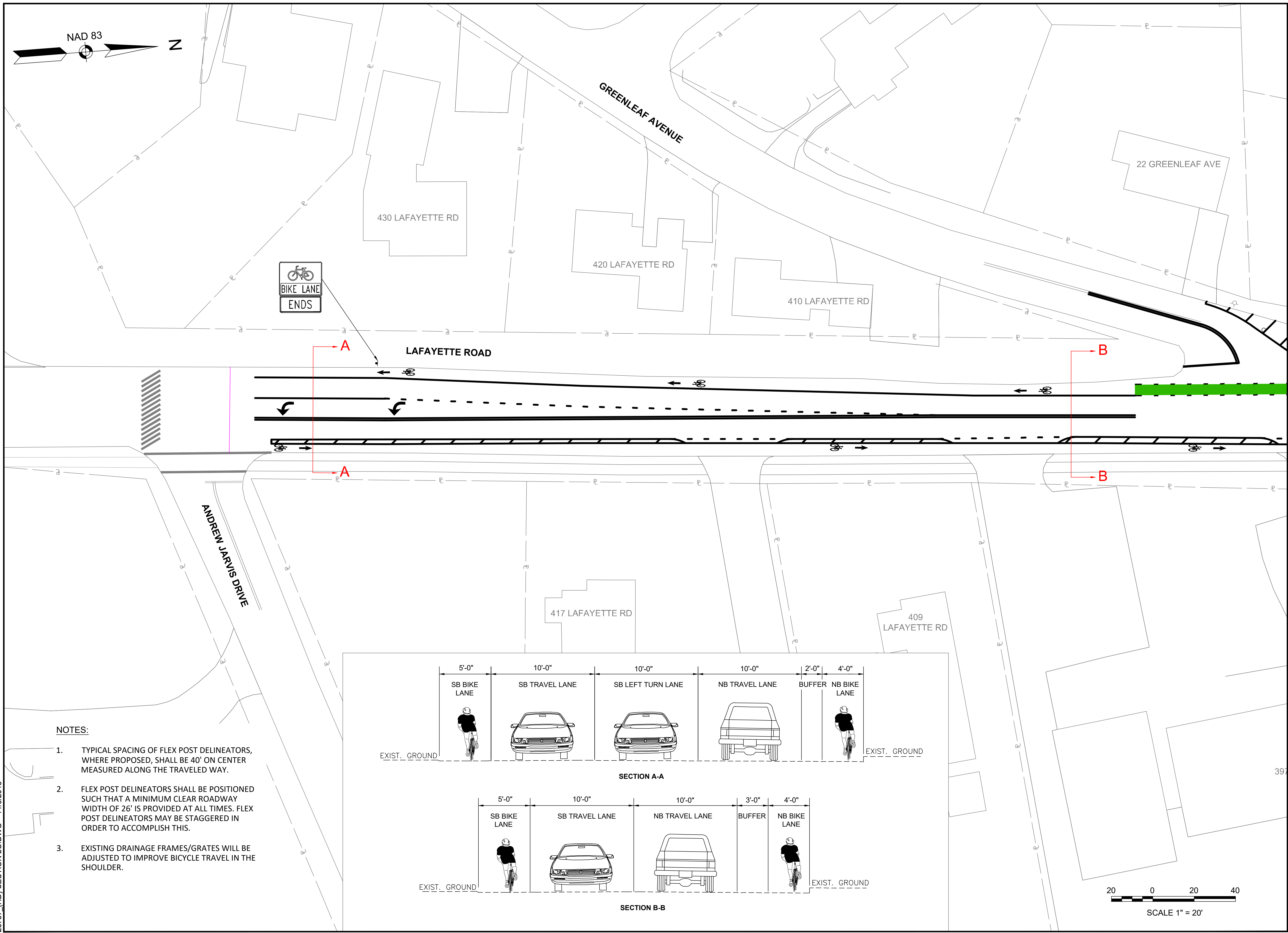
REVISIONS		
NO.	REVISION	DATE

TRAFFIC PLANS

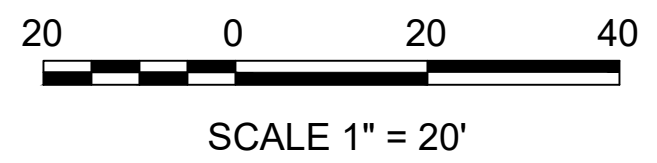
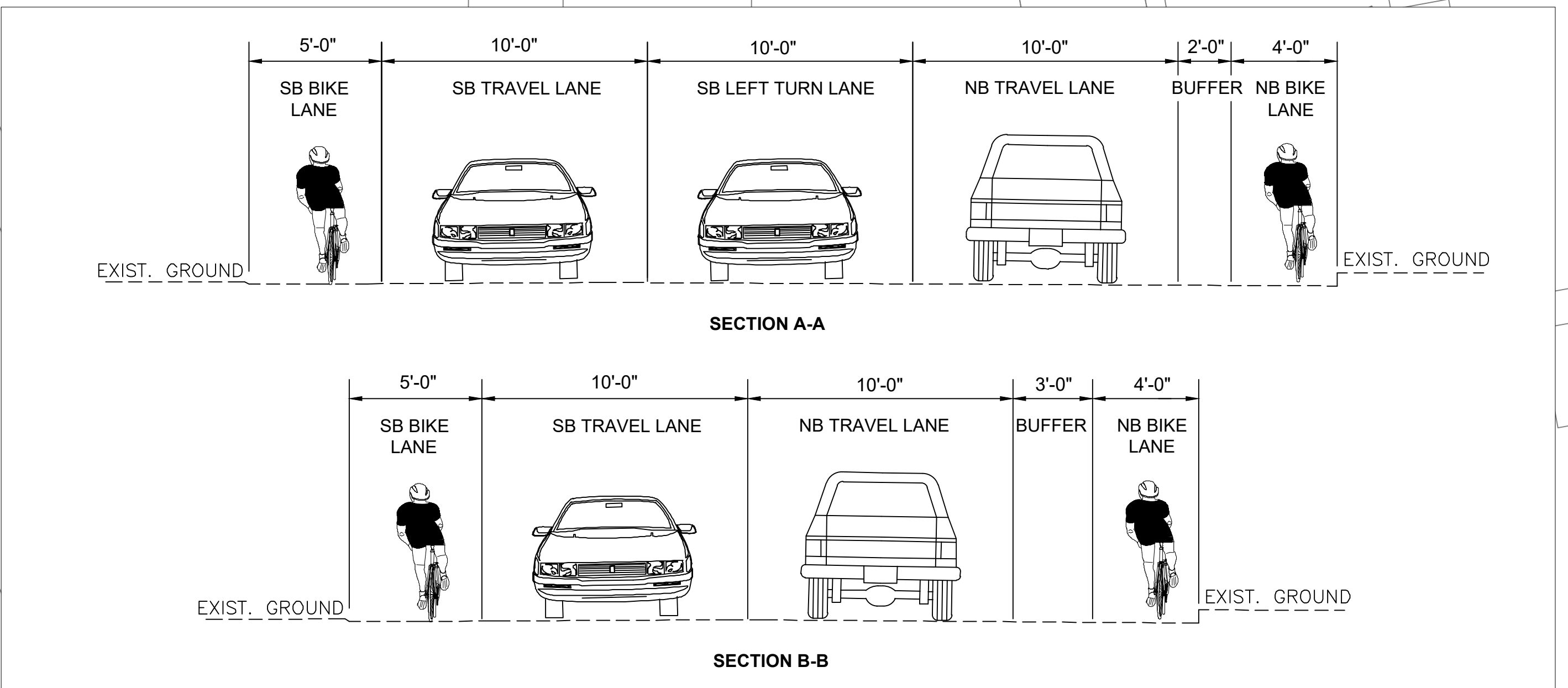
SCALE: 1"=20'

28757

1 OF 12



- NOTES:**
- TYPICAL SPACING OF FLEX POST DELINEATORS, WHERE PROPOSED, SHALL BE 40' ON CENTER MEASURED ALONG THE TRAVELED WAY.
 - FLEX POST DELINEATORS SHALL BE POSITIONED SUCH THAT A MINIMUM CLEAR ROADWAY WIDTH OF 26' IS PROVIDED AT ALL TIMES. FLEX POST DELINEATORS MAY BE STAGGERED IN ORDER TO ACCOMPLISH THIS.
 - EXISTING DRAINAGE FRAMES/GRATES WILL BE ADJUSTED TO IMPROVE BICYCLE TRAVEL IN THE SHOULDER.



28757 (HD) SECTION LO.DWG 11/9/2015

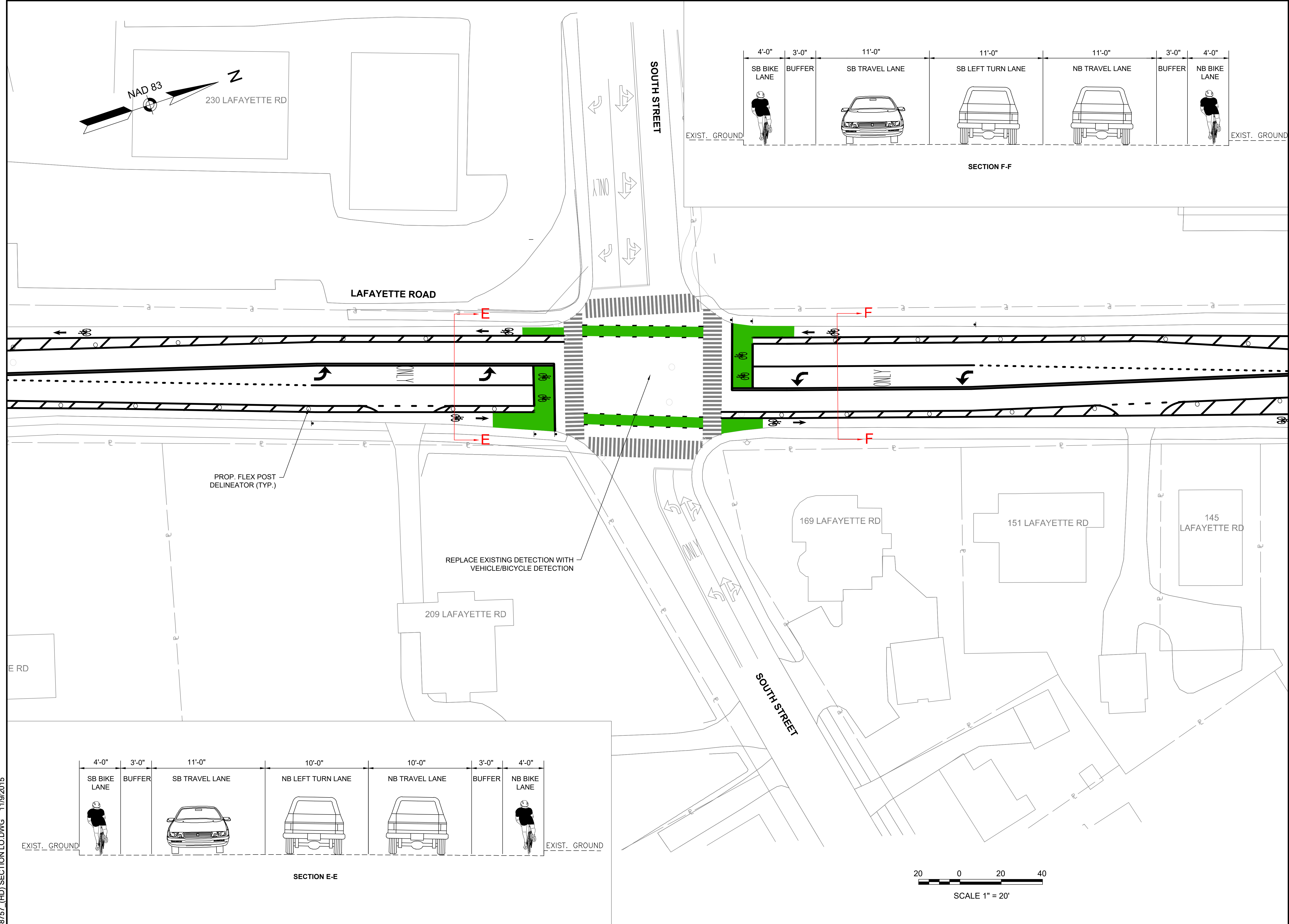
PREPARED FOR
 CITY OF PORTSMOUTH
 1 JUNKINS AVENUE
 PORTSMOUTH, NH

**ON-STREET BICYCLE FACILITY
 IMPROVEMENT PROJECT
 LAFAYETTE ROAD/MIDDLE STREET
 PORTSMOUTH, NH**

REVISIONS

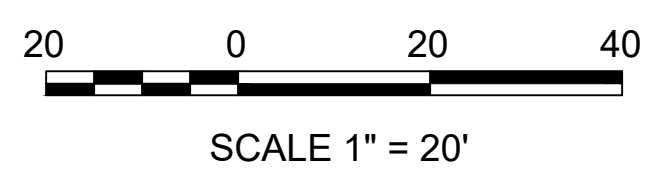
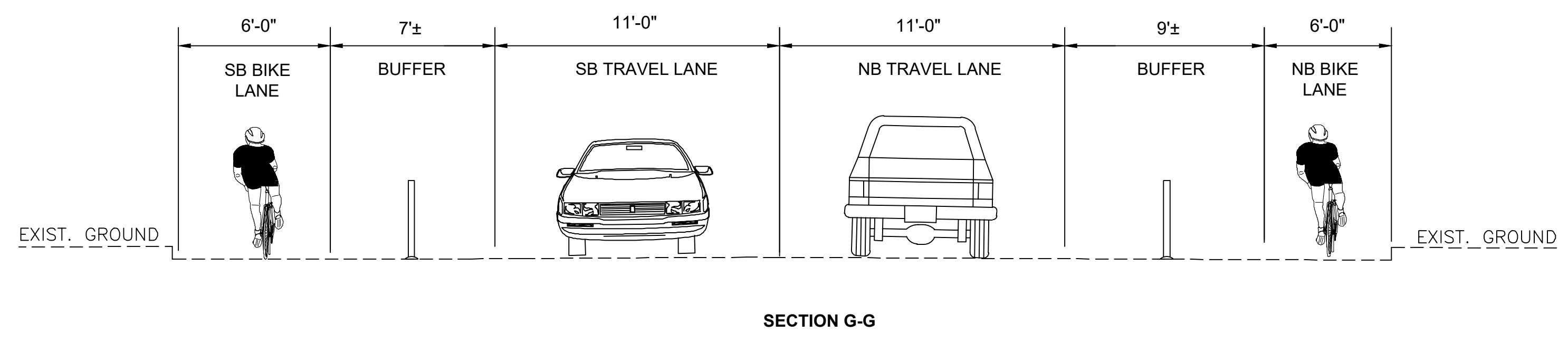
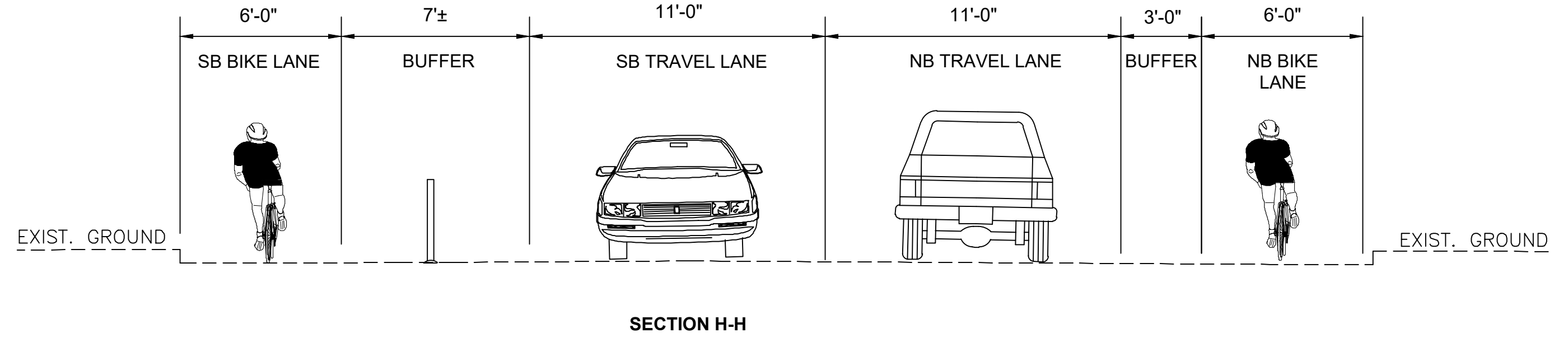
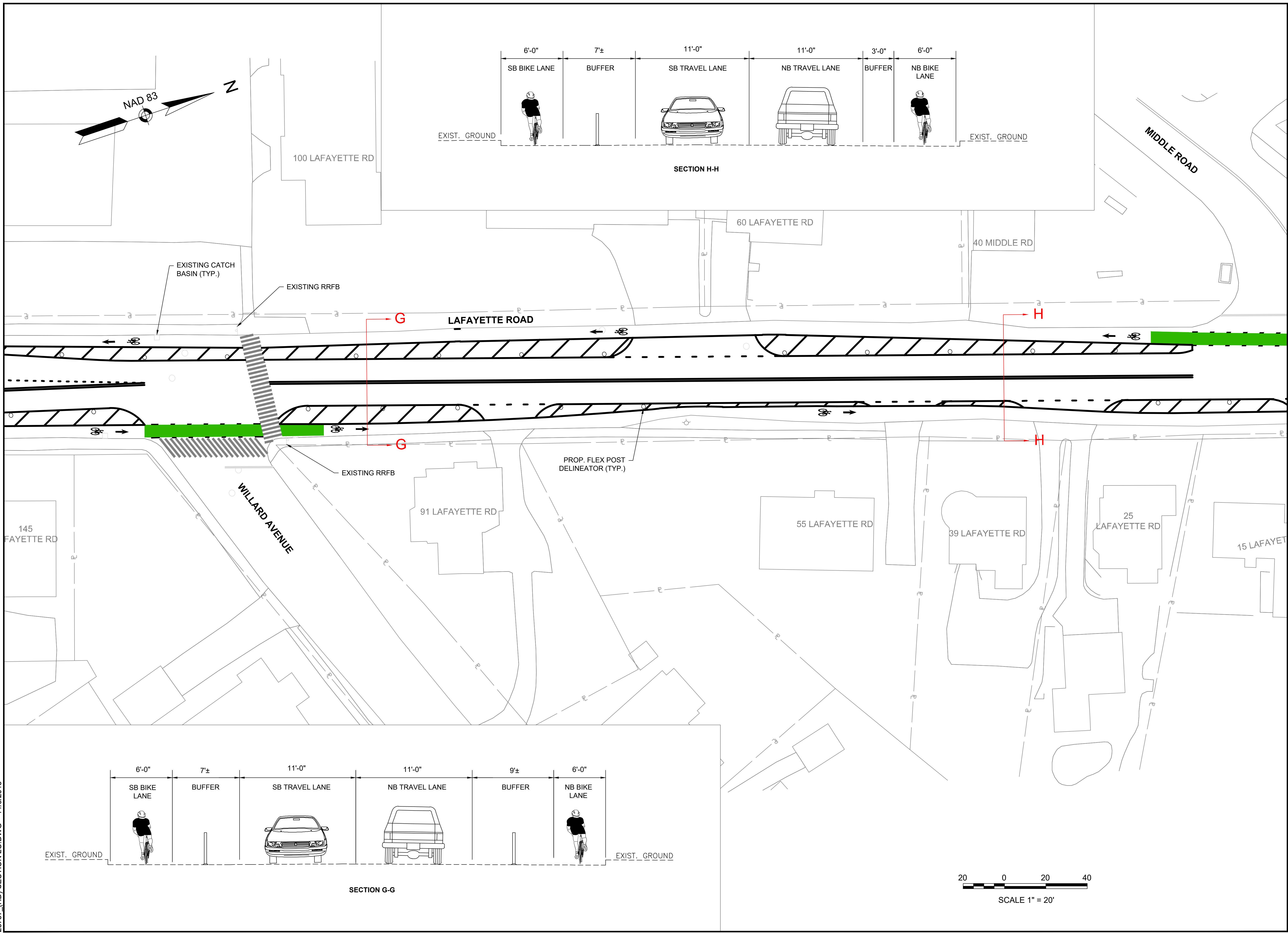
NO.	REVISION	DATE

10/14/2016
 DRAWN/DESIGN BY: DPE CHECKED BY: JPJ



28757 (HD) SECTION LO.DWG 11/9/2015

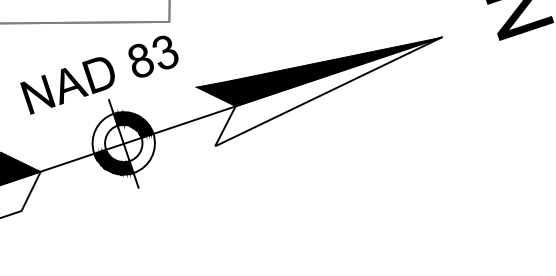
**ON-STREET BICYCLE FACILITY
 IMPROVEMENT PROJECT
 LAFAYETTE ROAD/MIDDLE STREET
 PORTSMOUTH, NH**



REVISIONS		
NO.	REVISION	DATE

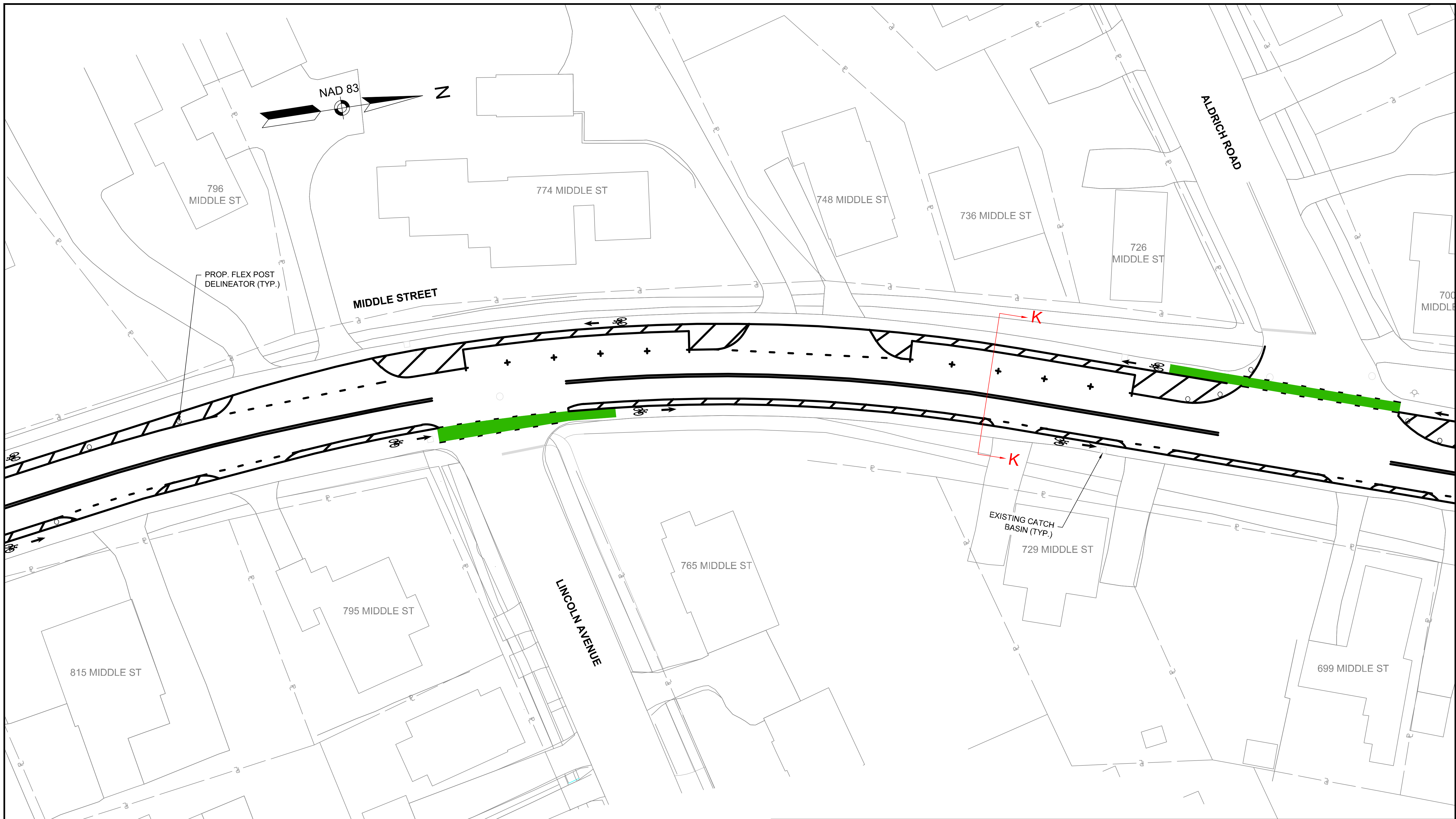
10/14/2016
 DRAWN/DESIGN BY: DPE
 CHECKED BY: JPJ

28757 (HD) SECTION LO.DWG 11/9/2015



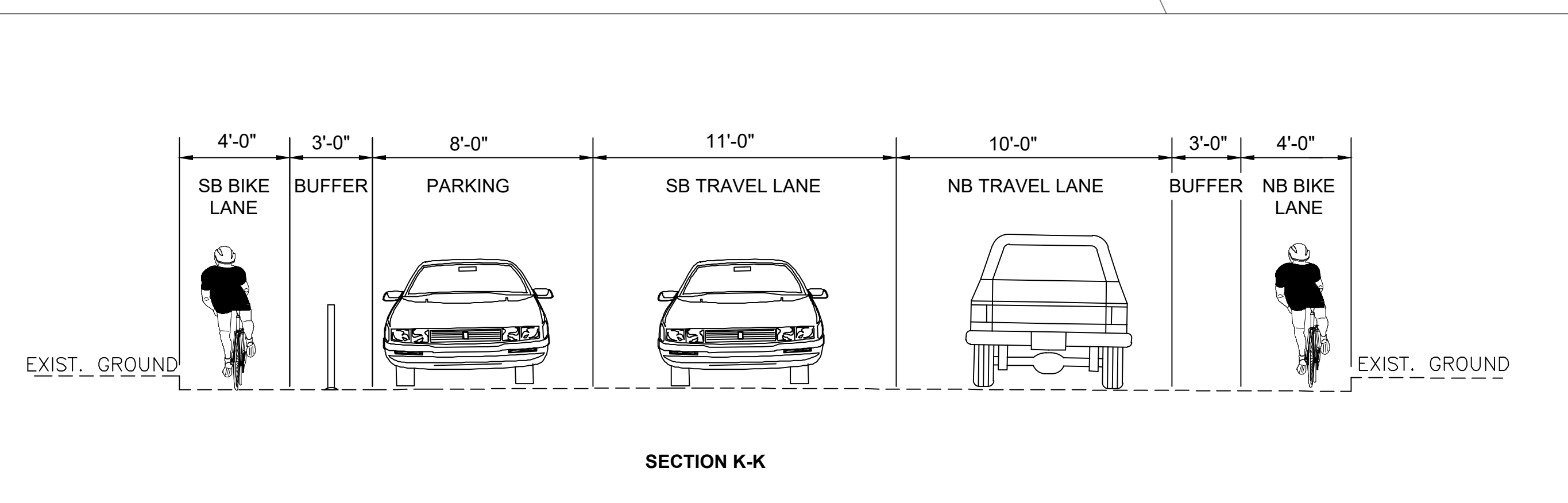
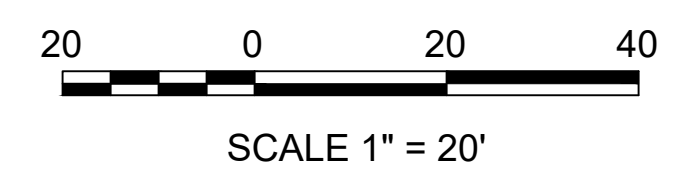
PREPARED FOR
 CITY OF PORTSMOUTH
 1 JUNKINS AVENUE
 PORTSMOUTH, NH

**ON-STREET BICYCLE FACILITY
 IMPROVEMENT PROJECT
 LAFAYETTE ROAD/MIDDLE STREET
 PORTSMOUTH, NH**



PROP. FLEX POST
 DELINEATOR (TYP.)

EXISTING CATCH
 BASIN (TYP.)



REVISIONS		
NO.	REVISION	DATE

10/14/2016
 DRAWN/DESIGN BY: DPE
 CHECKED BY: JPJ

TRAFFIC PLANS

SCALE:
 1" = 20'
 28757

6 OF 12

PREPARED FOR
 CITY OF PORTSMOUTH
 1 JUNKINS AVENUE
 PORTSMOUTH, NH

**ON-STREET BICYCLE FACILITY
 IMPROVEMENT PROJECT
 LAFAYETTE ROAD/MIDDLE STREET
 PORTSMOUTH, NH**

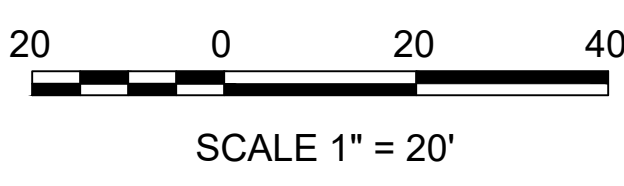
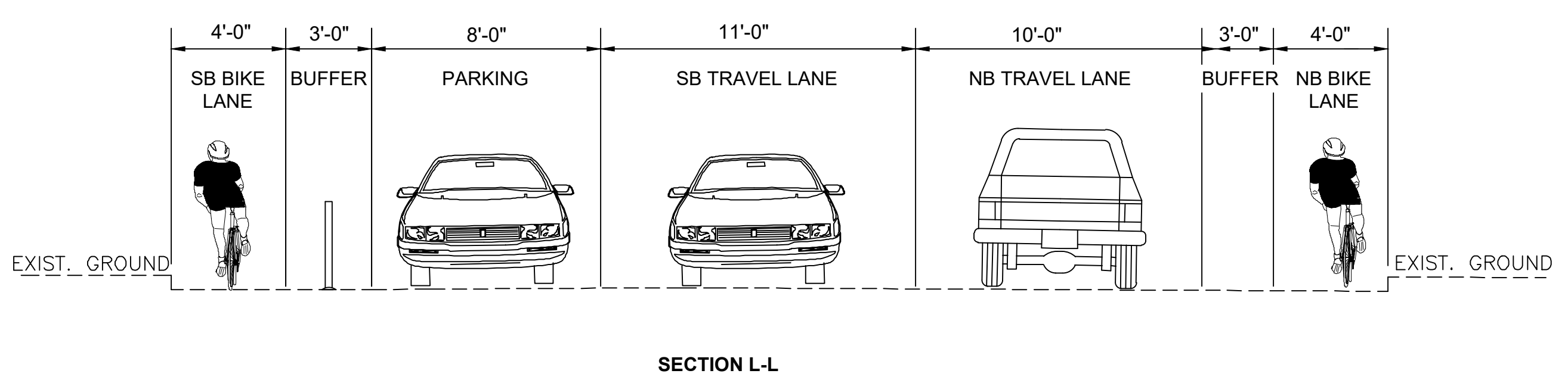
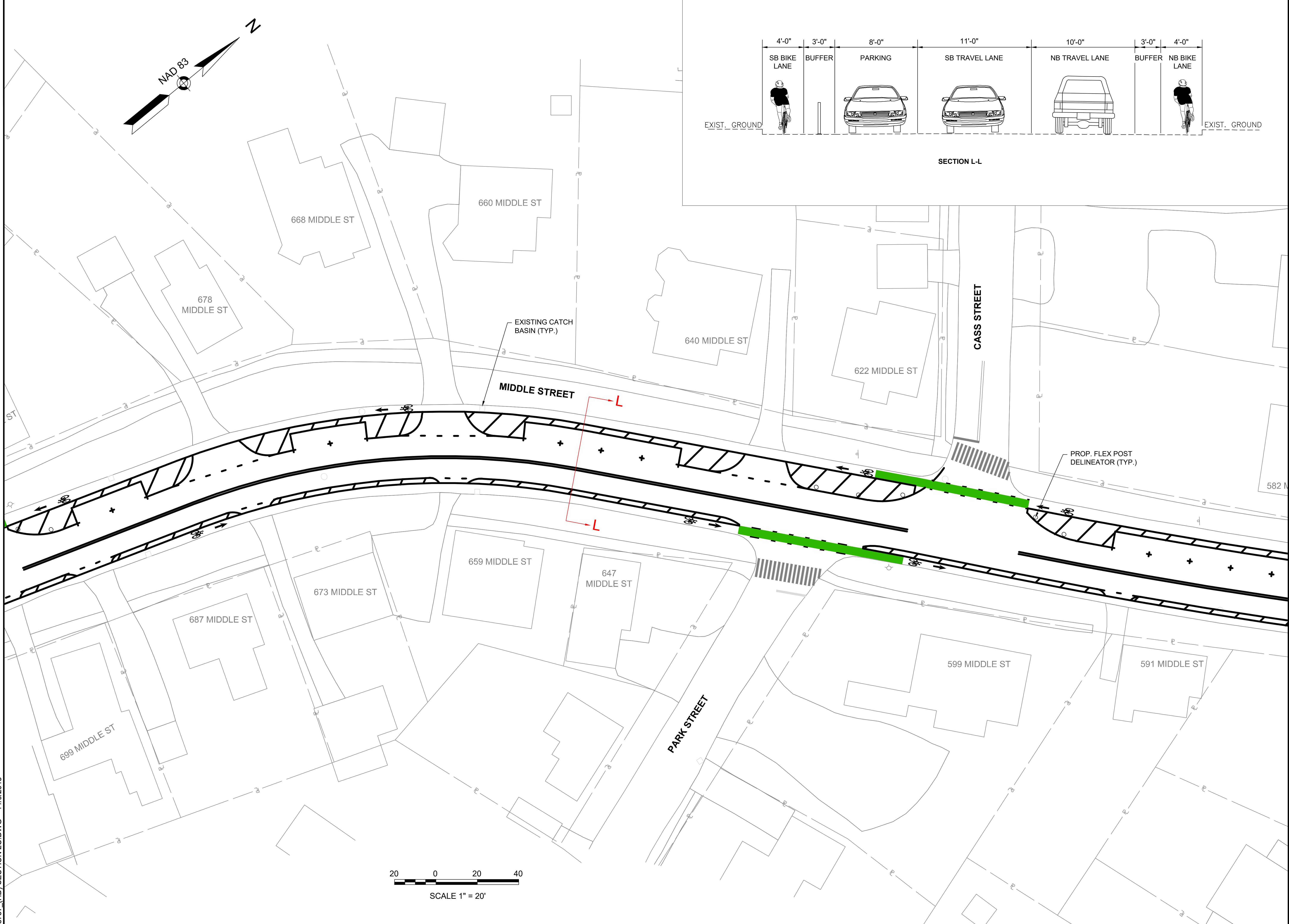
REVISIONS

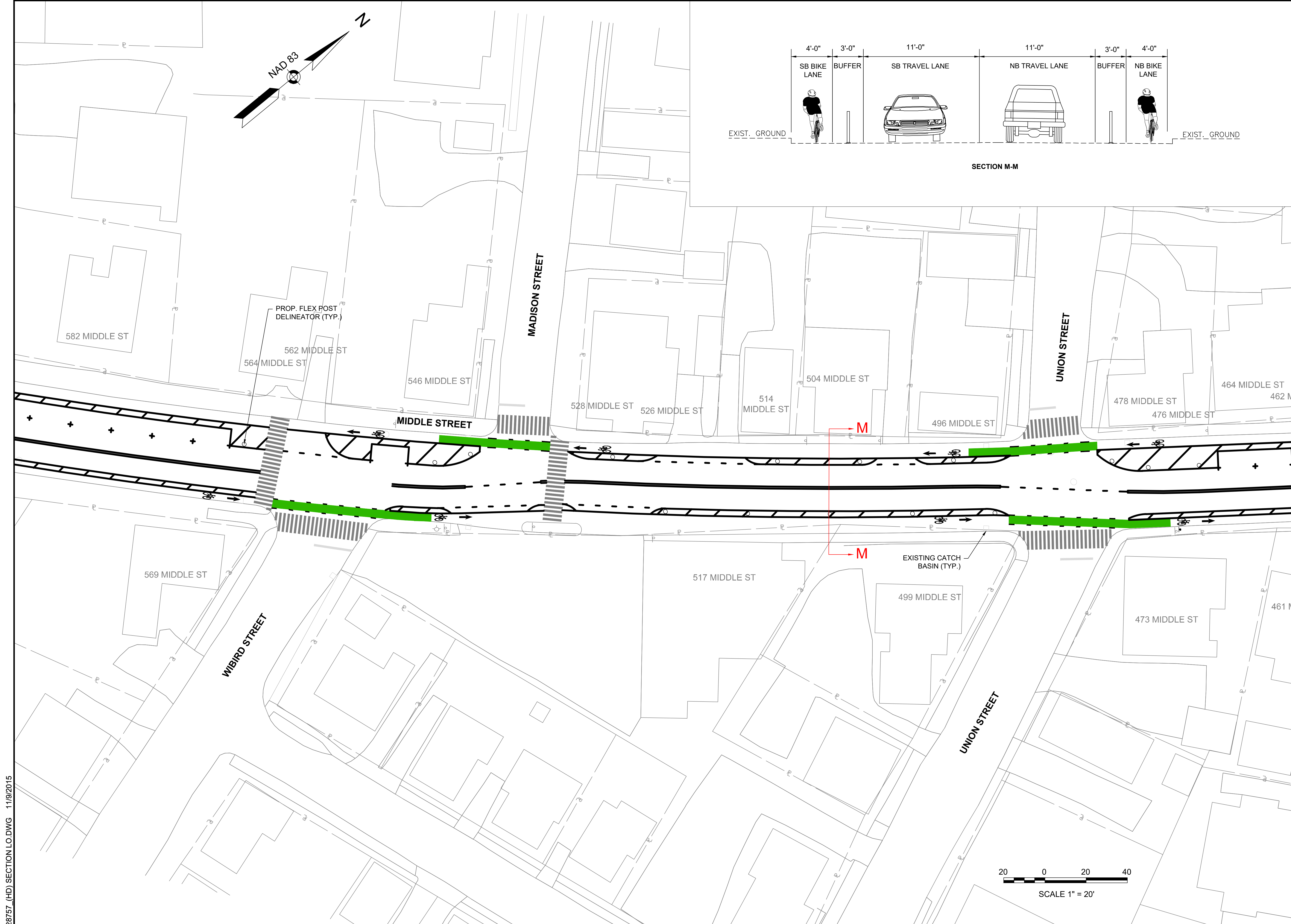
NO.	REVISION	DATE

NO.	REVISION	DATE
		10/14/2016
DRAWN/DESIGN BY	CHECKED BY	
DPE	JPJ	

TRAFFIC PLANS

SCALE:
 1"=20'
 28757





PREPARED FOR
 CITY OF PORTSMOUTH
 1 JUNKINS AVENUE
 PORTSMOUTH, NH

**ON-STREET BICYCLE FACILITY
 IMPROVEMENT PROJECT
 LAFAYETTE ROAD/MIDDLE STREET
 PORTSMOUTH, NH**

REVISIONS

NO.	REVISION	DATE

10/14/2016
 DRAWN/DESIGN BY: DPE
 CHECKED BY: JPJ

TRAFFIC PLANS
 SCALE: 1"=20'
 28757
 8 OF 12

28757 (HD) SECTION LC.DWG 11/9/2015



PREPARED FOR
 CITY OF PORTSMOUTH
 1 JUNKINS AVENUE
 PORTSMOUTH, NH

**ON-STREET BICYCLE FACILITY
 IMPROVEMENT PROJECT
 LAFAYETTE ROAD/MIDDLE STREET
 PORTSMOUTH, NH**

REVISIONS		
NO.	REVISION	DATE

28757 (HD) SECTION L0.DWG 11/9/2015

PREPARED FOR
 CITY OF PORTSMOUTH
 1 JUNKINS AVENUE
 PORTSMOUTH, NH

**ON-STREET BICYCLE FACILITY
 IMPROVEMENT PROJECT
 LAFAYETTE ROAD/MIDDLE STREET
 PORTSMOUTH, NH**

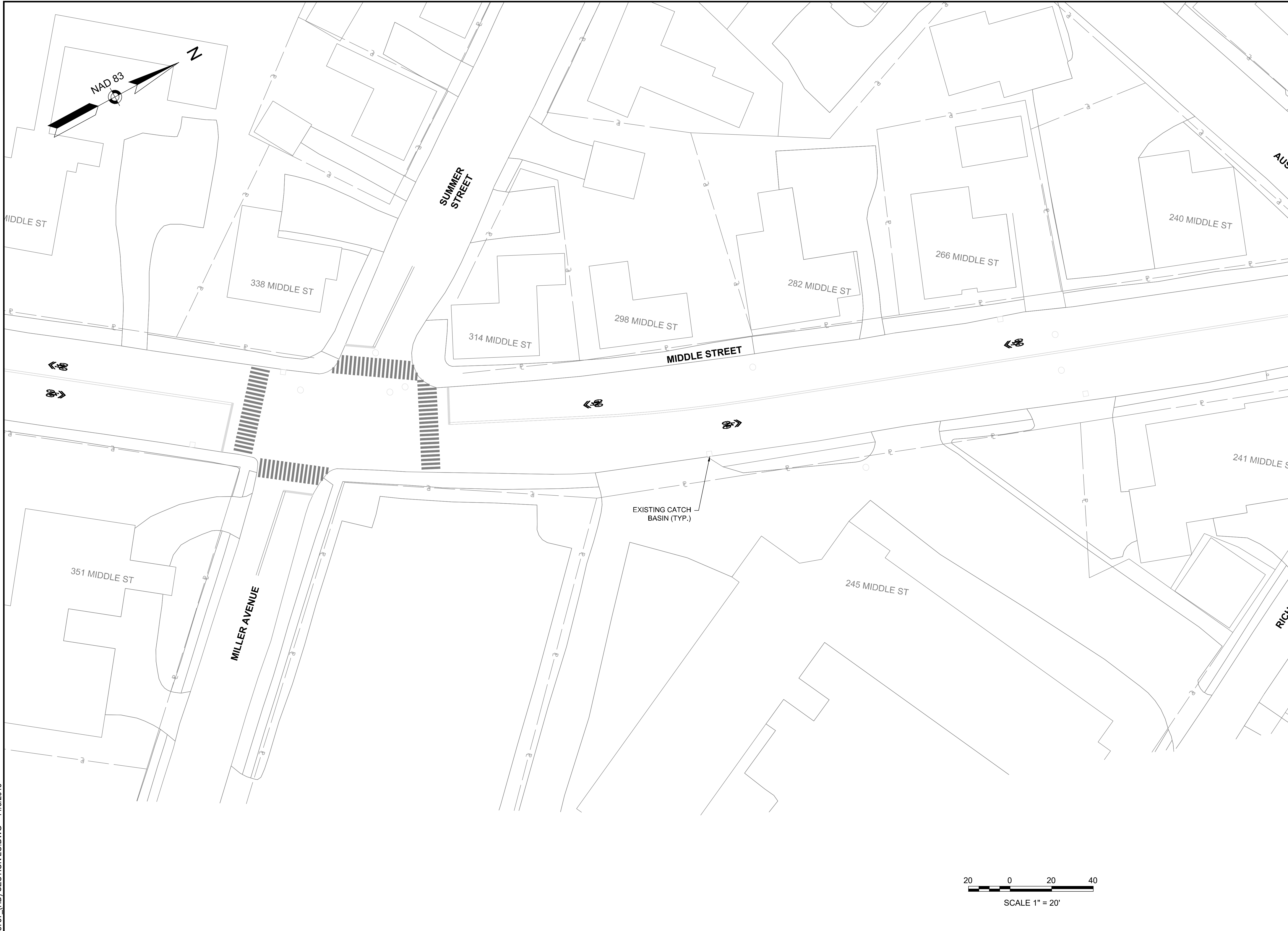
REVISIONS

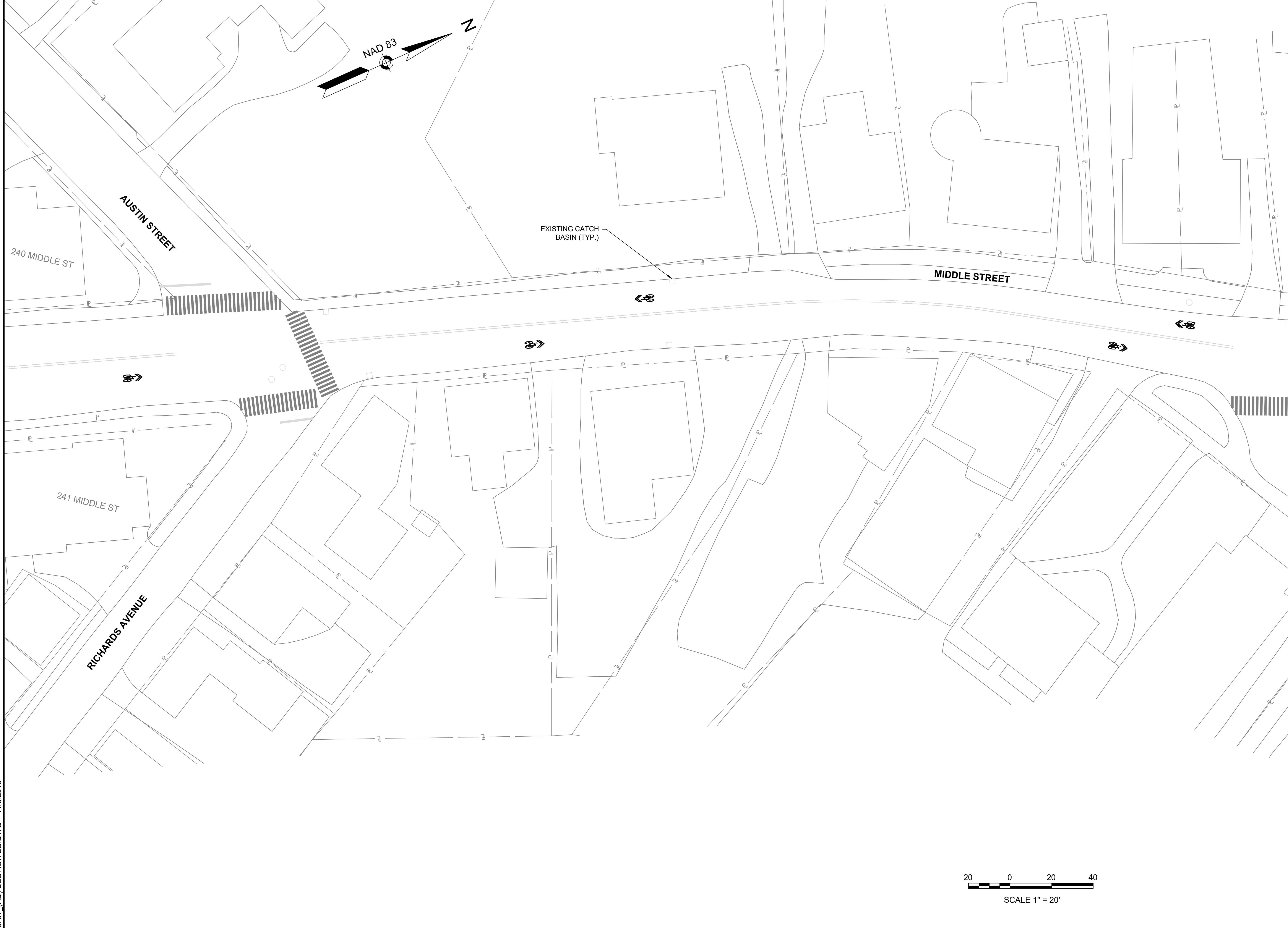
NO.	REVISION	DATE

10/14/2016
 DRAWN/DESIGN BY: DPE
 CHECKED BY: JPJ

TRAFFIC PLANS

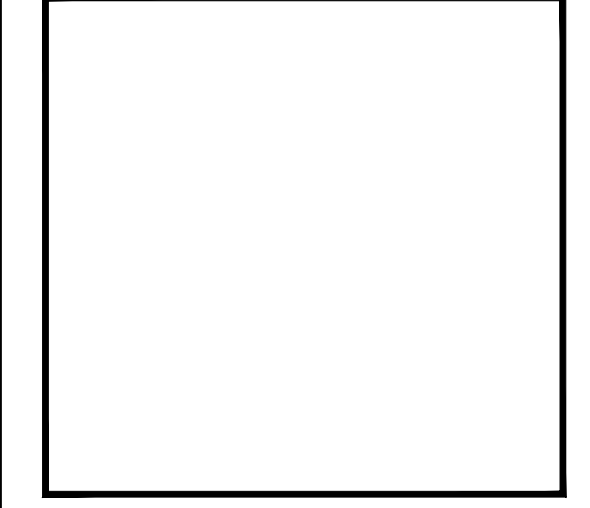
SCALE:
 1"=20'
 28757





28757 (HD) SECTION LC.DWG 11/9/2015

GPI Greenman-Pedersen, Inc.
Engineers, Architects, Planners, Construction Engineers & Inspectors
21 Daniel Street, Second Floor, Portsmouth, NH 03801
Tel: (603) 891-2213 Fax: (603) 658-3044
http://www.gpinet.com



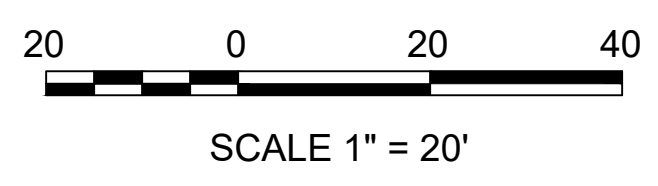
PREPARED FOR
CITY OF PORTSMOUTH
1 JUNKINS AVENUE
PORTSMOUTH, NH

**ON-STREET BICYCLE FACILITY
IMPROVEMENT PROJECT
LAFAYETTE ROAD/MIDDLE STREET
PORTSMOUTH, NH**

REVISIONS		
NO.	REVISION	DATE

10/14/2016

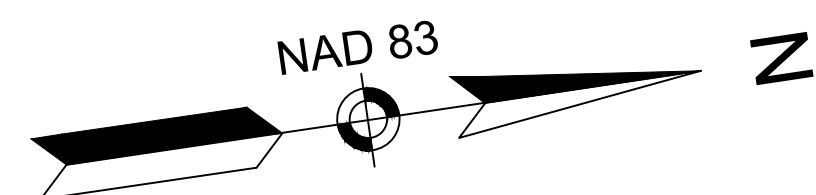
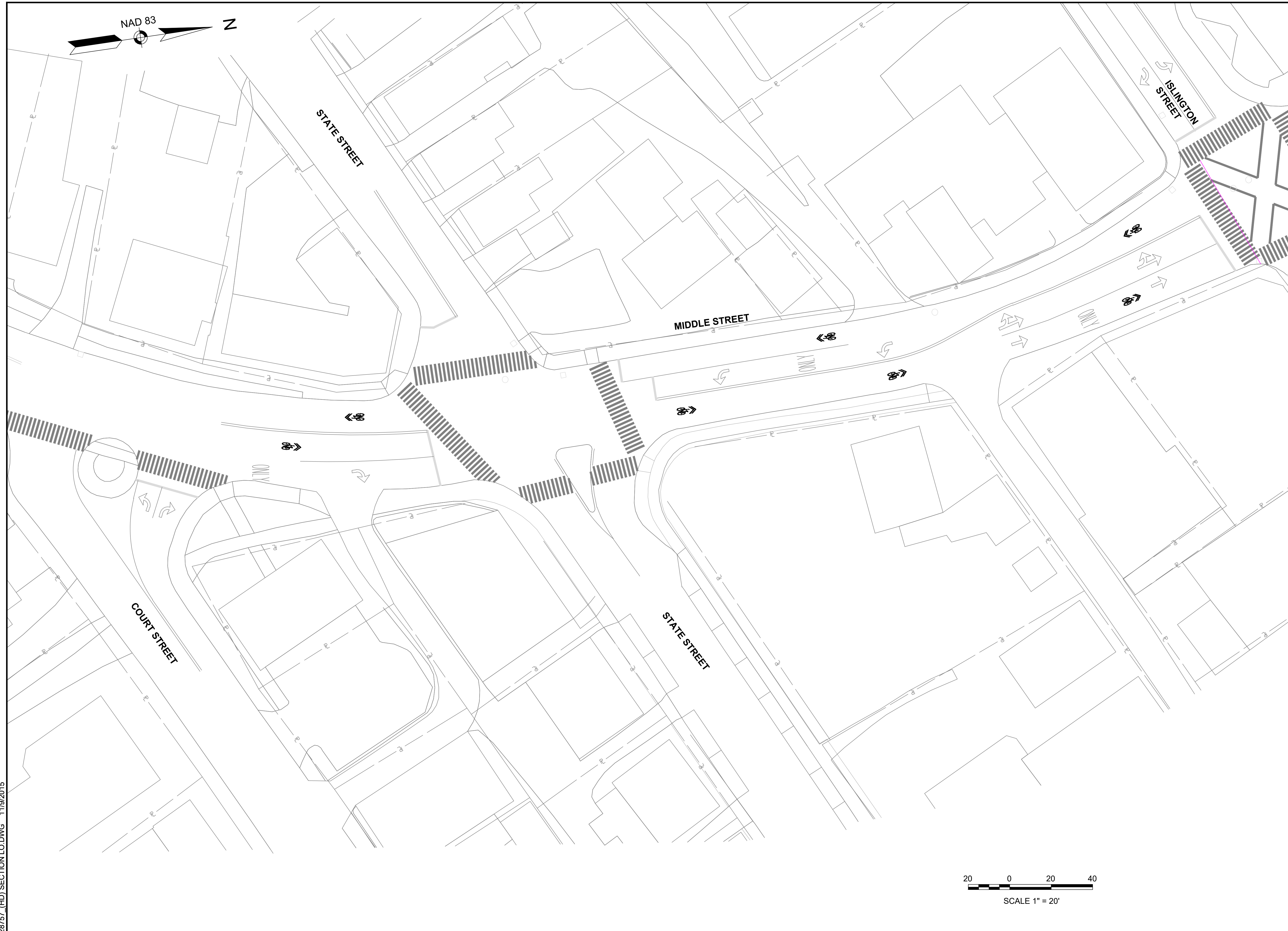
DRAWN/DESIGN BY DPE	CHECKED BY JPJ
------------------------	-------------------



TRAFFIC PLANS

SCALE:
1"=20'
28757

11 OF 12



GPI Greenman-Pedersen, Inc.
Engineers, Architects, Planners, Construction Engineers & Inspectors
21 Daniel Street, Second Floor, Portsmouth, NH 03801
Tel: (603) 891-2213 Fax: (978) 658-3044
<http://www.gpinet.com>

PREPARED FOR
CITY OF PORTSMOUTH
1 JUNKINS AVENUE
PORTSMOUTH, NH

**ON-STREET BICYCLE FACILITY
IMPROVEMENT PROJECT
LAFAYETTE ROAD/MIDDLE STREET
PORTSMOUTH, NH**

REVISIONS

NO.	REVISION	DATE

10/14/2016
DRAWN/DESIGN BY: DPE
CHECKED BY: JPJ

TRAFFIC PLANS

SCALE:
1"=20'
28757

